



ALICE BOGGIS-ROLFE

A Closer Look

ALICE BOGGIS-ROLFE

A Closer Look

30th October - 4th November 2023

Monday - Friday 10am - 6pm, Saturday 10am - 1pm

GALLERY EIGHT

8, Duke Street St. James's,
London SW1Y 6BN

Front cover | *Lilies* (detail), 30 x 25 cm, oil on panel, £1400

+44 (0) 7841 536 927 . mail@aliceboggis-rolfe.com . www.aliceboggis-rolfe.com . Instagram @aboggisrolfe_art

All works are available upon receipt of this catalogue. The full exhibition can be viewed online.



1 | *Alhambra*, 40 x 50 cm, oil on canvas, £3200

Whilst preparing for this exhibition people have often asked me if there is a theme. I can't say there is one aside from the fact that I have only painted things that completely captivate me and I find I cannot possibly resist painting. Life has changed since the birth of our daughter and time is precious both with and without her. My studio has provided a place of peace and contemplation and I have enjoyed painting more than ever before. In spite of having less time my pace has slowed and I have enjoyed using a tighter, more detailed approach. Artists are always told to 'loosen up' but I like scrutinizing my subjects and enjoy finding shapes and colours not visible at first glance. I find the process deeply meditative.

Tree of Life is an oak sapling, grown from an acorn collected from the oak tree where my grandfather's ashes were scattered by my father some thirty years ago. My husband propagated it in a vase given to us by my mother and we plan to plant it at our new house to celebrate the birth of our daughter, Artemis. It is my favourite painting in the exhibition.

With a few exceptions the landscapes are less of particular places than of things, rather like an outdoor still-life. *Six Magnificent Trees* gave me the same feeling as painting a vase of flowers. A keen eye might notice it started off as a small study of four trees, but I added two more in the larger painting. I loved how they stood like sunlit columns on a classical building.

A trip to Cape Town and the surrounding area provided an injection of inspiration and colour back in March. The resulting paintings take you on a short journey through the extraordinary city and its beaches, then along the Garden Route to Hermanus, Plettenberg Bay and Franschhoek, through a painter's eyes.

I hope you enjoy this collection of my thoughts in pictures.

Alice Boggis-Rolfe



2 | *Dahlia Stem*, 40 x 30 cm, oil on panel, £1850



3 | *Lilies*, 30 x 25 cm, oil on panel, £1400

4 | *Tree of Life*, 30 x 25 cm, oil on panel, £1400



5 | *Six Magnificent Trees*, 90 x 120 cm, oil on canvas, £10,000

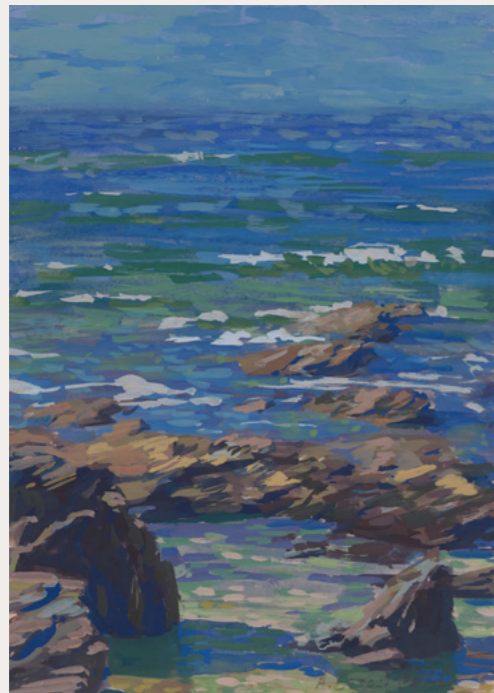




6 | *Magnolia*, 30 x 40 cm, oil on canvas, £1850

7 | *Tulipiere*, 61 x 46 cm, oil on canvas, £3600





8 | *Out to Sea, Greenaway*, 21 x 15 cm, gouache on paper, £800



9 | *Palms in Hermanus*, 21 x 15 cm, gouache on paper, £800



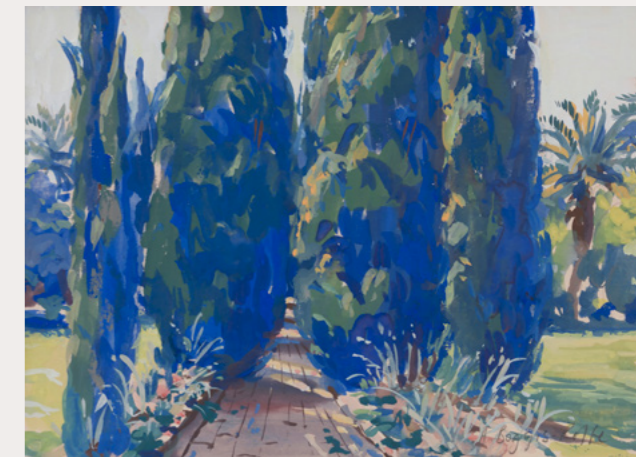
10



11

10 | *Four Trees*, 15 x 20 cm, gouache on paper, £800

11 | *Klein Constantia*, 15 x 20 cm, gouache on paper, £800



12



13

12 | *Cypress Trees, Study*, 15 x 20 cm, gouache on paper, £800

13 | *Kirstenbosch Cycads*, 15 x 20 cm, gouache on paper, £800

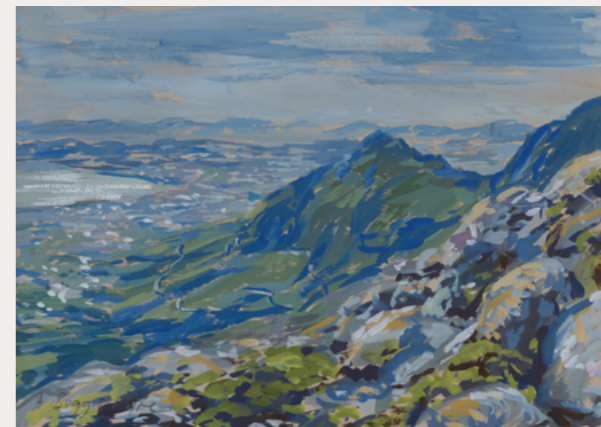


14 | *Iris Stem*, 30 x 40 cm, oil on canvas, £1850

15 | *Tulips*, 18 x 18 cm, oil on panel, £1100



16 | *Café au Lait Dahlias*, 50 x 50 cm, oil on canvas, £3600



17 | *Cape Town from Table Mountain*, 70 x 100 cm, oil on canvas, £7500

18 | *Table Mountain View*, 15 x 20 cm, gouache on paper, £800



19 | *Kirstenbosch*, 15 x 40 cm, oil on panel, £1500



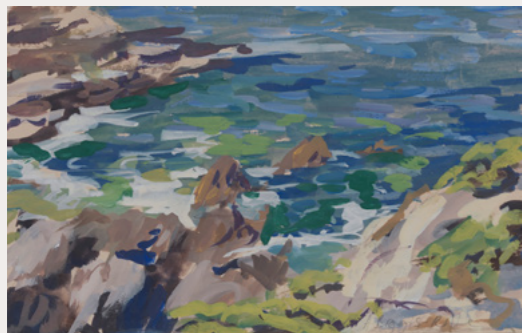
20 | *Franschhoek*, 18 x 25 cm, gouache on paper, £900



21 | *Cape Town Palms*, 11 x 17 cm, gouache on paper, £700



22 | *Cape Town, Last Light*, 40 x 50 cm, oil on canvas, £3200



23 | *Study for Shoals*, 11 x 17 cm, gouache on paper, £700

24 | *Shoals*, 90 x 120 cm, oil on canvas, £10,000





25 | *Small's Cove, Salcombe*, 36 x 36 cm, oil on canvas, £2000



26 | *Lantivet Bay*, 24 x 30 cm, oil on canvas, £1400



27 | *Cloud Shadows*, 18 x 40 cm, oil on panel, £1500



28 | *The Lagoon, Hermanus*, 18 x 31 cm, oil on panel, £1500



29 | *Seashells I*, 25 x 30 cm, oil on canvas, £1400



30 | *Seashells II*, 15 x 30 cm, oil on panel, £1100

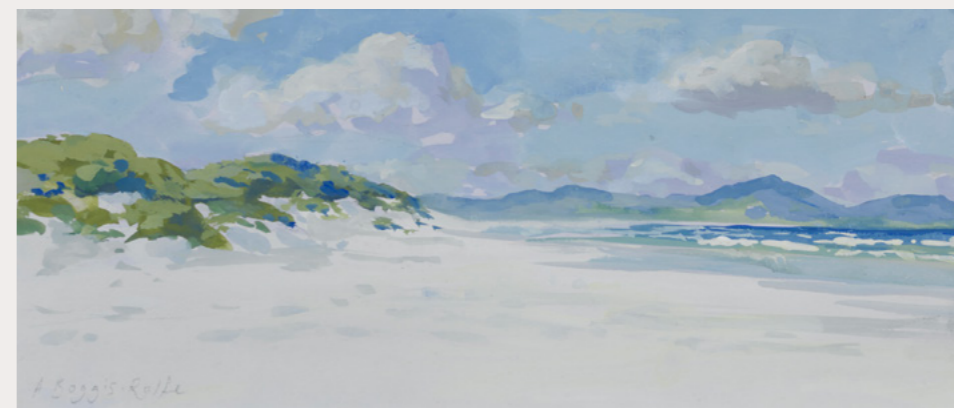


31 | *Dusk, Sea*, 36 x 36 cm, oil on canvas, £2000

32 | *Hard Frost*, 30 x 40 cm,
oil on panel, £1850



33 | *Grotto Beach, Hermanus*,
13 x 29 cm, gouache on
paper, £850





34 | *Succulent*, 20 x 15 cm, oil on panel, £1100

35 | *Fern*, 90 x 90 cm, oil on canvas, £7500





36 | *Cypress Trees*, 70 x 100 cm, oil on canvas, £7500



37 | *Bakoven*, 25 x 30 cm, oil on panel, £1400
38 | *Bellagio* 30 x 30 cm, oil on panel, £1650



39



40



41



42

39 | *Plettenberg Bay*, 19 x 26 cm, gouache on paper, £950
40 | *Snowy Mountains above Lake Como*, 15 x 20 cm, gouache on paper, £800
41 | *Shallow Waters*, 20 x 30 cm, gouache on paper, £1000
42 | *Brea Hill*, 14 x 20 cm, gouache on paper, £800



43 | *Snowdrops*, 20 x 20 cm, oil on panel, £1100



44 | *Apple Blossom*, 20 x 25 cm, oil on panel, £1200

45 | *Narcissi*, 30 x 30 cm, oil on panel, £1650





46 | *Moonlight on Topkapi Palace*, 20 x 30 cm, oil on panel, £1300

47 | *Como Reflections*, 20 x 30 cm, oil on panel, £1300

48 | *Pink Pelargonium*, 80 x 60 cm, oil on canvas, £5200





49 | *Cyclamen*, 25 x 30 cm, oil on canvas, £1400



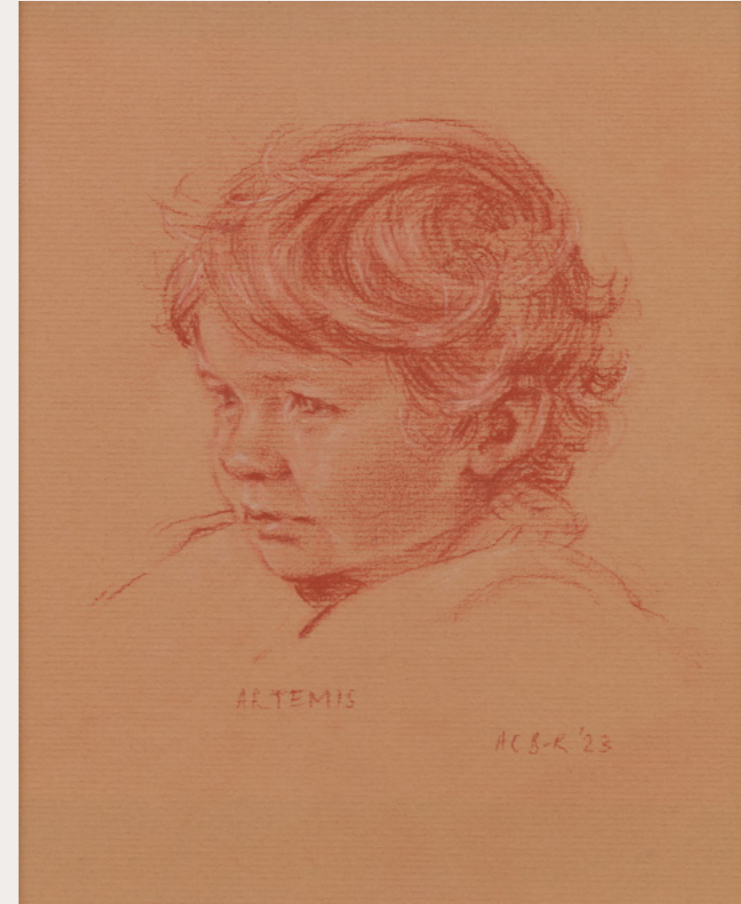
50 | *A Good Year for Roses*, 25 x 30 cm, oil on canvas, £1400



51 | *Courgette Plant*, 40 x 30 cm, oil on canvas, £1850



52 | *Nasturtium*, 30 x 20 cm, oil on panel, £1300



53 | *Artemis*, 30 x 25 cm, pastel on paper, NFS

List of Works

	<i>Title</i>	<i>Size (cm)</i>	<i>Size (inches)</i>	<i>Medium</i>	<i>Price</i>
50	A Good Year for Roses	25 x 30	10 x 12	Oil on canvas	£1400
1	Alhambra	40 x 50	16 x 20	Oil on canvas	£3200
44	Apple Blossom	20 x 25	8 x 10	Oil on panel	£1200
53	Artemis	30 x 25	12 x 10	Pastel on paper	NFS
37	Bakoven	25 x 30	10 x 12	Oil on panel	£1400
38	Bellagio	30 x 30	12 x 12	Oil on panel	£1650
42	Brea Hill	14 x 20	6 x 8	Gouache on paper	£800
16	Café au Lait Dahlias	50 x 50	20 x 20	Oil on canvas	£3600
17	Cape Town from Table Mountain	70 x 100	28 x 39	Oil on canvas	£7500
22	Cape Town Last Light	40 x 50	16 x 20	Oil on canvas	£3200
21	Cape Town Palms	11 x 17	4 x 7	Gouache on paper	£700
27	Cloud Shadows	18 x 40	7 x 16	Oil on panel	£1500
47	Como Reflections	20 x 30	8 x 12	Oil on canvas	£1300
51	Courgette Plant	40 x 30	16 x 12	Oil on canvas	£1850
49	Cyclamen	25 x 30	10 x 12	Oil on canvas	£1400
36	Cypress Trees	70 x 100	28 x 39	Oil on canvas	£7500
12	Cypress Trees Study	15 x 20	6 x 8	Gouache on paper	£800
2	Dahlia Stem	40 x 30	16 x 12	Oil on panel	£1850
31	Dusk, Sea	36 x 36	14 x 14	Oil on canvas	£2000
35	Fern	90 x 90	35 x 35	Oil on canvas	£7500
10	Four Trees	15 x 20	6 x 8	Gouache on paper	£800
20	Franschhoek	18 x 25	7 x 10	Gouache on paper	£900
33	Grotto Beach, Hermanus	13 x 29	5 x 11	Gouache on paper	£850
32	Hard Frost	30 x 40	12 x 16	Oil on panel	£1850
14	Iris Stem	30 x 40	12 x 16	Oil on canvas	£1850
19	Kirstenbosch	15 x 40	6 x 16	Oil on panel	£1500
13	Kirstenbosch Cycads	15 x 20	6 x 8	Gouache on paper	£800

11	Klein Constantia	15 x 20	6 x 8	Gouache on paper	£800
26	Lantivet Bay	24 x 30	9 x 12	Oil on canvas	£1400
3	Lilies	30 x 25	12 x 10	Oil on panel	£1400
6	Magnolia	30 x 40	12 x 16	Oil on canvas	£1850
46	Moonlight on Topkapi Palace	20 x 30	8 x 12	Oil on panel	£1300
45	Narcissi	30 x 30	12 x 12	Oil on panel	£1650
52	Nasturtium	30 x 20	12 x 8	Oil on panel	£1300
8	Out to Sea from Greenaway	21 x 15	8 x 6	Gouache on paper	£800
9	Palms in Hermanus	21 x 15	8 x 6	Gouache on paper	£800
48	Pink Pelargonium	80 x 60	31 x 24	Oil on canvas	£5200
39	Plettenberg Bay	19 x 26	7 x 10	Gouache on paper	£950
29	Seashells I	25 x 30	10 x 12	Oil on canvas	£1400
30	Seashells II	15 x 30	6 x 12	Oil on panel	£1100
41	Shallow Waters	20 x 30	8 x 12	Gouache on paper	£1000
24	Shoals	90 x 120	35 x 47	Oil on canvas	£10,000
5	Six Magnificent Trees	90 x 120	35 x 47	Oil on canvas	£10,000
25	Small's Cove, Salcombe	36 x 36	14 x 14	Oil on canvas	£2000
43	Snowdrops	20 x 20	8 x 8	Oil on panel	£1100
40	Snowy Mountains above Lake Como	15 x 20	6 x 8	Gouache on paper	£800
23	Study for Shoals	11 x 17	4 x 7	Gouache on paper	£700
34	Succulent	20 x 15	8 x 6	Oil on panel	£1100
18	Table Mountain View	15 x 20	6 x 8	Gouache on paper	£800
28	The Lagoon, Hermanus	18 x 31	7 x 12	Oil on panel	£1500
4	Tree of Life	30 x 25	12 x 10	Oil on panel	£1400
7	Tulipiere	61 x 46	24 x 18	Oil on canvas	£3600
15	Tulips	18 x 18	7 x 7	Oil on panel	£1100

All works are available upon receipt of this catalogue and can be purchased online, by email, telephone or in person at the exhibition. Images of all the paintings, with and without frames, can be viewed at www.aliceboggis-rolfe.com. UK delivery is included, please enquire for overseas shipping quotes prior to purchasing.

Selected Exhibitions

Seven British Impressionists - Panter & Hall - 2022

Reflections - solo exhibition - Panter & Hall - 2021

Lamu to Laikipia; Paintings from Kenya - solo exhibition - The Gallery at Green & Stone - 2021

Art For Youth - 2020

British Art Portfolio - 2020 - present

Thompson's Gallery - 2020

INDIA - online solo exhibition - 2020

New Horizons - Osborne Studio Gallery - 2020

Royal Institute of Oil Painters - 2016, 2019

Shoals & Shadows - Solo Exhibition - London - 2019

Ruth Borchard Self Portrait Prize - Piano Nobile Gallery - 2019

Royal Society of British Artists - Mall Galleries - 2018, 2019

Wykeham Gallery - 2017 - present

Royal Society of Portrait Painters - 2012, 2018

Fresh Paint II: Millennials - Fine Art Commissions, London - 2018

Small Paintings Group - 2017

Paintings from Around the World - solo Exhibition - London - 2017

Affordable Art Fair Battersea - 2017

Osborne Studio Gallery - 2016

New English Art Club - Mall Galleries - 2015, 2016, 2021

Grandy Art, London - 2016

Royal Academy Summer Exhibition - selected, not hung - 2016

Royal Arts Prize - Royal Opera Arcade Gallery, Pall Mall - 2016

Solo Exhibition - The Coningsby Gallery, London - 2015

Chelsea Art Society Annual Exhibition - 2012 - present

Biography

Born in 1990, Alice Boggis-Rolfe is a figurative painter. Her subject matter veers from vast open landscapes to quiet, intimate interiors and still-lives. She spent her twenties travelling the world with her paints, holding exhibitions back in London between trips. Her practice has since evolved into carefully constructed studio work using a broad palette, interspersed with bouts of landscape painting.

Alice trained at Chelsea College of Art and Heatherley's School of Fine Art. She has since held six sell-out solo exhibitions in London some of which sold out in a matter of hours. Aside from these she exhibits regularly with the New English Art Club, the Royal Society of Portrait Painters and the Royal Institute of Oil Painters. Her work has received numerous awards such as the Winsor & Newton First Prize for a Young Artist and The William Sloane Medal and in 2019 she was both shortlisted and highly commended for the Ruth Borchard Self Portrait Prize and De Laszlo Award. In 2017, Alice took part in the Television series Landscape Artist of the Year reaching the final three out of thousands of contestants nationwide. Alice lives and works in Gloucestershire.



Awards

- 2020 Diana Brooks Prize, Art For Youth
- 2019 Ruth Borchard Self Portrait Prize, shortlisted & highly commended
- 2018 William Sloane Medal
- 2018 Highly Commended for the De Laszlo Foundation Award
- 2016 Sky Landscape Artist of the Year Finalist
- 2016 Winsor & Newton First Prize for a young Artist, Royal Institute of Oil Painters Wedlake Bell Award for a Young Artist June 2016
- 2012 Green & Stone Prize for an Oil Painting, Chelsea Art Society
- 2009 Broad Canvas Prize for a young artist

Education

- 2010 - 12 Heatherley School of Fine Art - Diploma in Portraiture
- 2009 - 10 Chelsea College of Art and Design - Foundation Course
- 2004 - 09 Wychwood School, Oxford

