



ALICE BOGGIS-ROLFE

LAMU TO LAIKIPIA
PAINTINGS FROM KENYA

ALICE BOGGIS-ROLFE

LAMU TO LAIKIPIA

PAINTINGS FROM KENYA

THE GALLERY AT GREEN & STONE
7TH-13TH JUNE 2021

MONDAY-SATURDAY 10AM-6PM | SUNDAY 12-2PM
251-253 FULHAM ROAD, LONDON, SW3 6HY

All works are available to purchase
upon receipt of this catalogue.

Cover Image

19 | *Blue Dusk, Lamu*, 90x120cm, oil on canvas



1 | *Peponi Boats*, 25x30cm, oil on canvas panel

After months in lockdown I was incredibly lucky to get to Kenya for a long-planned trip over the winter. I have travelled extensively with my work, but have never been quite so moved to paint as I was during and after this trip.

Throughout the first lockdown I painted furiously, but gradually the inspiration faded along with any sense of urgency or pressure. Suddenly I had just two weeks in Kenya and had to paint everything I possibly could. The days raced past and I am left with a slideshow of memories from my time in Lamu, Borana and Samburu, which I can share with you through an eclectic collection of paintings. One minute a flurry of dhows sets out from Shela village, the next a vast expanse of hot red earth takes over, then fading pink mountains, decaying sea-worn walls, and back to a lush green view of Pride Rock and beyond. I saw some wonderful animals and wildlife, but these don't feature in either my paintings or principal memories of the country. It was the space, the light, the feeling of being somewhere so far from home, which I felt compelled to capture and share.

I returned to England to quarantine during the worst lockdown, and in those first weeks of the year my studio remained in sub-zero temperatures with very little natural light. And yet I can only conclude this had an unexpectedly positive impact on my work. I surrounded myself with my largest paintings to date, perhaps trying to prove to myself that I hadn't just woken up from a dream. I am so pleased to be able to share them with you in this exhibition.

— Alice Boggis-Rolfe



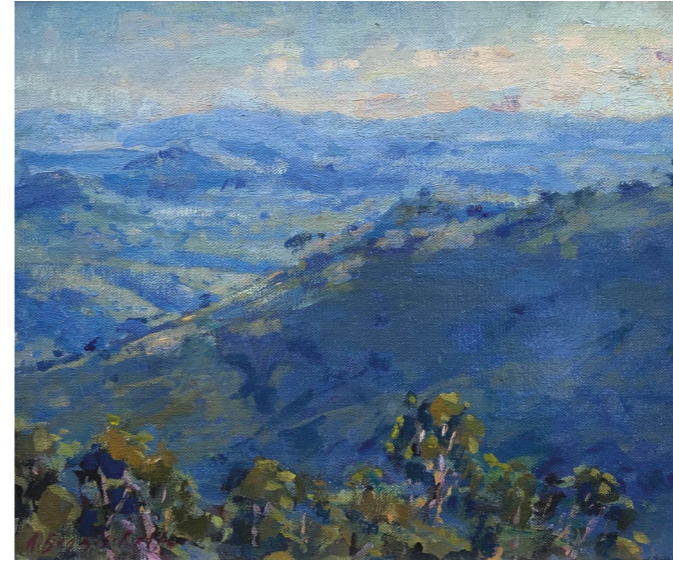
2 | *Sunlit Steps, Shela*, 25x30cm, oil on canvas panel



3 | *Pink Light on the Sacred Mountain*, 15x40cm, oil on panel



4 | *Violet Clouds, Borana, 25x30cm, oil on panel*



5 | *Blue Sunrise, Borana, 25x30cm, oil on canvas panel*



6 | *Flurry of Dhows, 20x25cm, oil on canvas panel*



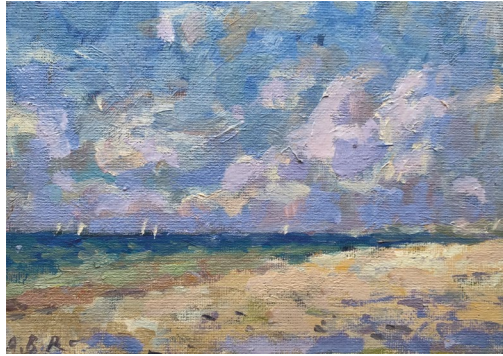
7 | *Beneath The Acacias*, 76x110cm, oil on canvas



8 | *Decaying Walls*, 30x25cm, oil on canvas panel



9 | *Borana Twilight*, 50x60cm, oil on canvas



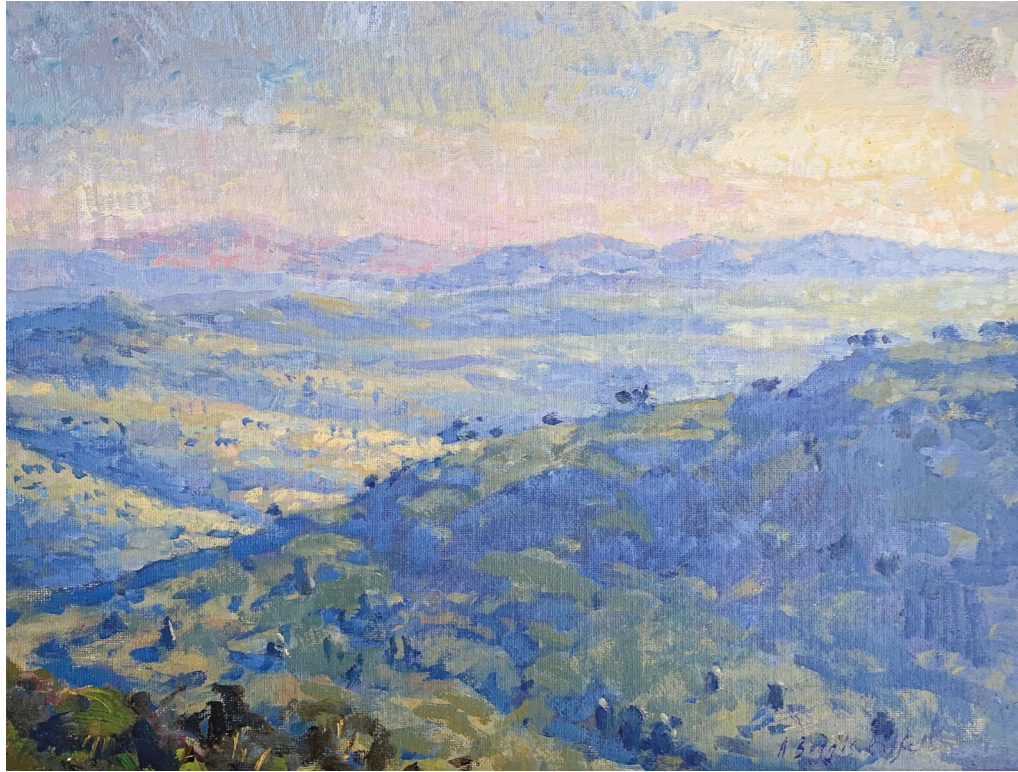
10 | *Billowing Clouds, Lamu*, 12x18cm, oil on canvas panel



11 | *Pink Sky*, 25x30cm, oil on canvas panel



12 | *Lunch at Peponi*, 30x40cm, oil on panel



13 | *First Light, Borana*, 30x40cm, oil on canvas panel

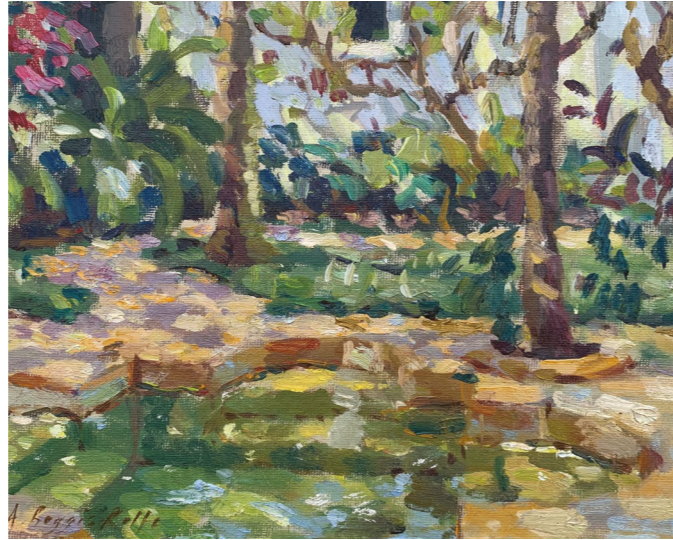


14 | *Borana Twilight Study*, 20x30cm, oil on canvas panel





16 | *Hazy Afternoon, Samburu*, 22x28cm, oil on canvas panel



17 | *Tropical Garden, Lamu*, 22x28cm, oil on canvas panel



18 | *Palms and Dhows*, 30x40cm, oil on canvas panel





20 | *Craggy Hillside, Laikipia*, 30x40cm, oil on canvas panel



21 | *Bobbing Dhows, Early Morning*, 50x50cm, oil on canvas





23 | *Where the Weaver Birds Nest*, 20x30cm, oil on canvas panel



24 | *Peponi Sunset*, 40x50cm, oil on canvas



List of Works

No.	Title	Dimensions (cm)	Dimensions (inch)	Medium
1	Peponi Boats	25x30	10x12	oil on canvas panel
2	Sunlit Steps, Shela	25x30	10x12	oil on canvas panel
3	Pink Light on the Sacred Mountain	15x40	6x16	oil on panel
4	Violet Clouds, Borana	25x30	10x12	oil on panel
5	Blue Sunrise, Borana	25x30	10x12	oil on canvas panel
6	Flurry of Dhows	20x25	8x10	oil on canvas panel
7	Beneath The Acacias	76x110	30x43	oil on canvas
8	Decaying Walls	30x25	12x10	oil on canvas panel
9	Borana Twilight	50x60	20x24	oil on canvas
10	Billowing Clouds, Lamu	12x18	5x7	oil on canvas panel
11	Pink Sky	25x30	10x12	oil on canvas panel
12	Lunch at Peponi	30x40	12x16	oil on panel
13	First Light, Borana	30x40	12x16	oil on canvas panel
14	Borana Twilight Study	20x30	8x12	oil on canvas panel
15	Pride Rock	76x102	30x40	oil on canvas
16	Hazy Afternoon, Samburu	22x28	9x11	oil on canvas panel
17	Tropical Garden, Lamu	22x28	9x11	oil on canvas panel
18	Palms and Dhows	30x40	12x16	oil on canvas panel
19	Blue Dusk, Lamu	90x120	36x47	oil on canvas
20	Craggy Hillside, Laikipia	30x40	12x16	oil on canvas panel
21	Bobbing Dhows, Early Morning	50x50	20x20	oil on canvas
22	The Golden Hour	76x102	30x40	oil on canvas
23	Where the Weaver Birds Nest	20x30	8x12	oil on canvas panel
24	Peponi Sunset	40x50	16x20	oil on canvas
25	Last of the Birdsong	50x70	20x28	oil on canvas

Biography

Born in 1990, Alice Boggis-Rolfe is a figurative painter. Her subject matter veers from vast open landscapes to quiet, intimate interiors and still-lives. She spent her twenties travelling the world with her paints, holding exhibitions back in London between trips. Her practice has since evolved into carefully constructed studio work using a broad palette, interspersed with bouts of the plein air painting she still adores.

Alice trained at Chelsea College of Art and Heatherley's School of Fine Art. She has since held four sell-out solo exhibitions, the most recent of which sold out in a matter of hours. Aside from these she exhibits regularly with the New English Art Club, the Royal Society of Portrait Painters, the Royal Society of British Artists and the Royal Institute of Oil Painters. Her work has received numerous awards such as the Winsor & Newton First Prize for a Young Artist and The William Sloane Medal and the Diana Brooks Prize. In 2017, Alice took part in the Television series Landscape Artist of the Year reaching the final three out of thousands of contestants nationwide. Alice lives in Gloucestershire with her husband Harry.

Photo Credit: Edmund Kendall



Education

2005–2009 Wychwood School
2009–10 Foundation Course, Chelsea College of Art and Design
2010–12 Diploma in Portraiture, Heatherley School of Fine Art

Awards

2020 Diana Brooks Prize, Art For Youth
2019 Ruth Borchard Self Portrait Prize (*shortlisted & highly commended*)
2018 William Sloane Medal
2018 Highly Commended for the De Laszlo Foundation Award
2017 Sky Landscape Artist of the Year Finalist
2016 Winsor and Newton First Prize for a young Artist, Royal Institute of Oil Painters
2016 Wedlake Bell Award for a Young Artist June
2012 Green & Stone Prize for an Oil Painting , Chelsea Art Society
2009 Broad Canvas Prize for a Young Artist

Selected Exhibitions

Thompson's Gallery 2020
INDIA - Online Solo Exhibition 2020
New Horizons, Osborne Studio Gallery, March 2020
Royal Institute of Oil Painters 2016, 2019
Shoals & Shadows, Solo Exhibition, London 2019
Ruth Borchard Self Portrait Prize, Piano Nobile Gallery 2019
Royal Society of British Artists, Mall Galleries 2018, 2019
Wykeham Gallery 2017–Present
Royal Society of Portrait Painters 2012, 2018
Fresh Paint II: Millennials, Fine Art Commissions, London 2018
Paintings from Around the World, Solo Exhibition, London 2017
Affordable Art Fair Battersea 2017
Osborne Studio Gallery 2016, 2020
New English Art Club, Mall Galleries 2015, 2016
Grandy Art, London 2016
Royal Academy Summer Exhibition 2016, (*selected, not hung*)
Royal Arts Prize, Royal Opera Arcade Gallery, Pall Mall 2016
Solo Show , The Coningsby Gallery, London 2015
Chelsea Art Society Annual Exhibition 2012–Present

